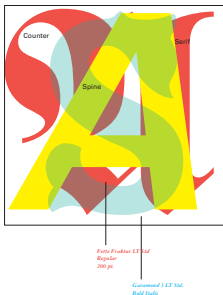


Exercise 02

Drawing Type / Type Drawing [25 pts.]



Methodology

Use an 11" X 17" vertical format page.
Draw an 8" X 8" square in the center of the page.
Using Adobe Illustrator and working with layers, fit a letter from each classification [using your initials] into the square.

Divide the letters out to create two compositions. [artboards in Adobe Illustrator]
Select a color for each letter.
Design a system to label each typeface, font variation, pt. size.
Use another typographic system to label to anatomical parts of the letters. [see example]

Classifications

Blackletter, Old Style, Transitional, Modern, Slab Serif or Egyptienne, San Serif, Italics, Display or Decorative,

A demonstration will be given to show you how to build the artwork in Adobe Illustrator for this exercise.

Stack letterforms in various hues and shades and then diagram the properties of each typeface. Draw letters of your initials from each classification into a composition. Adjust the opacity and color of the layers to make two beautiful compositions. Label the typefaces and as many parts of the letters and as you can.

Objectives

Research typeface design and visual language.
Explore the expressive qualities of different type families.
Discover typographic forms and styles.
Learn how to organize type specimens according to a classification system.
Learn how to identify type classifications and then design compositions with letterforms from each category.
Learn how to arrange type to make a descriptive infographic, chart or diagram about typography
Discover how to overlay letterforms to reveal the anatomical features of the typeface.
Learn how to color code the anatomical parts of each letterform and diagram the various parts that make it unique.

Tips

Diagram each anatomical part that is revealed.
Try to reveal as many as you can through the layering process.
Select hues and values to make the illustration the most effective to view.
Use only a hairline [.25 pt. Stroke] to make the lines to illustrate each part
Match the color of the type for each typeface to the name.
Design this will care and strive to create the most effective layouts possible.
Print the two diagrams out for review in color.
Turn the .pdf into Box for evaluation.
Write a short statement about the exercise, describing what you discovered about type classification and letterform anatomy.

Deadline: Thursday, January 26 at 8:00 a.m.
Printed and pinned up. Ready for review.

Extra credit: re-draw the letterforms using the pen tool. +5 pts.